

Tech Sheet

Newly developed S.O.E.TM grades

① L520 (Trial grade) : PP-compatible S.O.E.TM

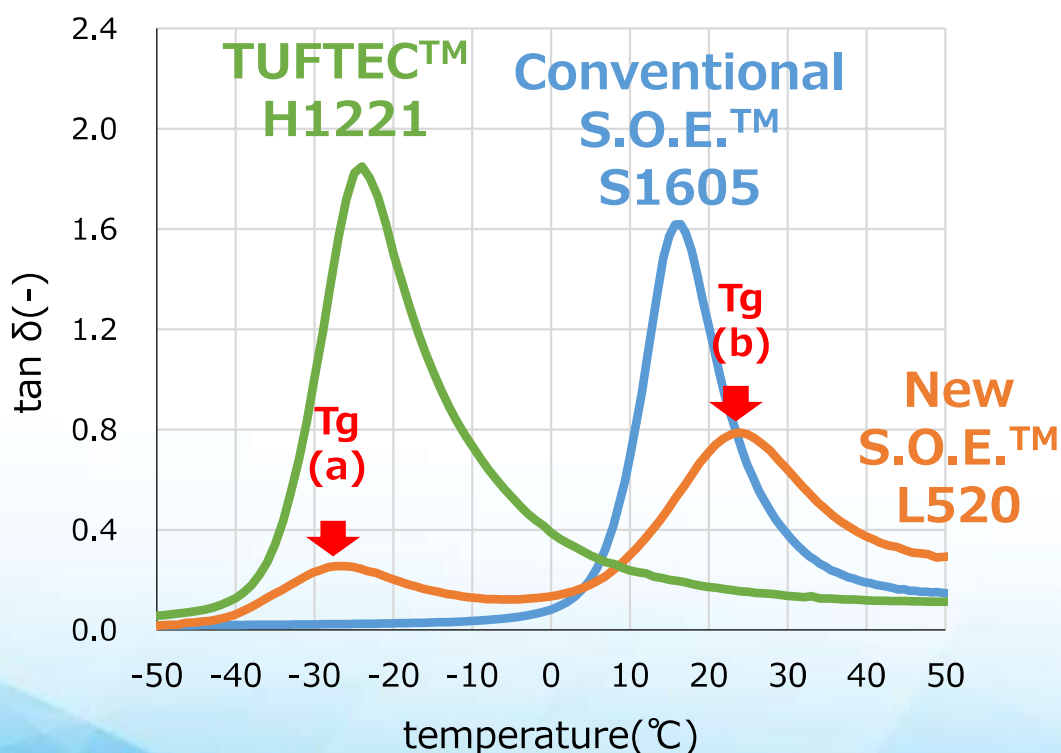
Having two Tg peaks (Tg(a)& Tg(b)) and excellent compatibility with PP, a newly developed S.O.E.TM grade "L520" works best as a compatibilizer between PP and a conventional S.O.E.TM grade, which makes it possible to further improve the abrasion resistance and C-set of your compounds (PP, TPE-S etc.).

Benefits

- Excellent compatibility with PP
- Excellent abrasion resistance
- Low C-set (heat-resistance)
- Vibration damping property
- Soft-touch feeling
- Good mechanical properties at low temp.

Applications

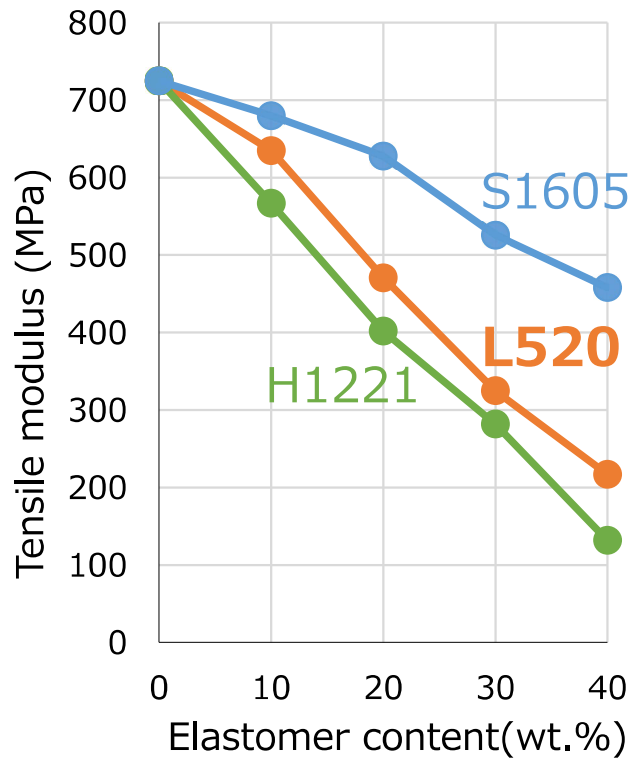
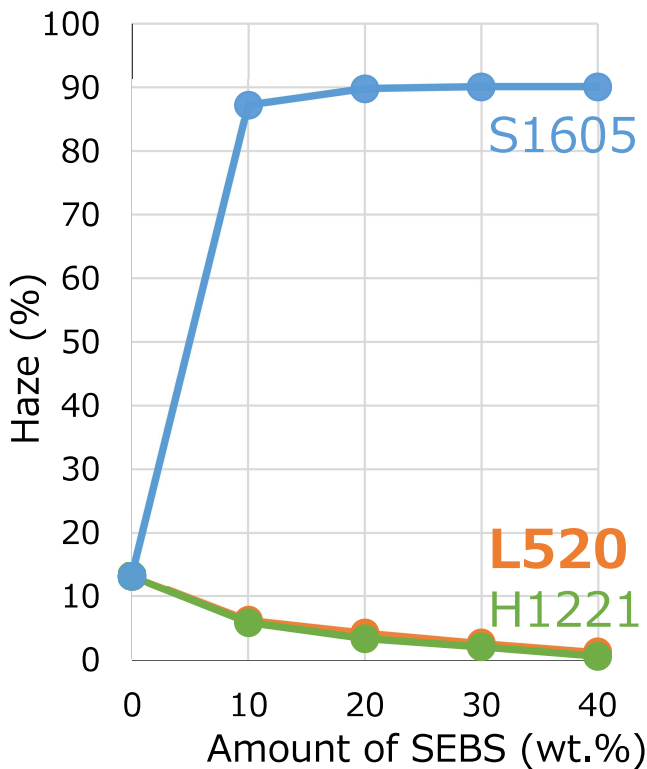
- Automotive interior
- Medical tubing
- Protect film (adhesive)



① L520 (Trial grade) : PP-compatible S.O.E.™

L520 provides excellent transparency and flexibility.

L520 highly compatible with PP can provide high transparency and flexibility comparable with H1221.



[Formulation]

PP/SEBS=10/0~6/4

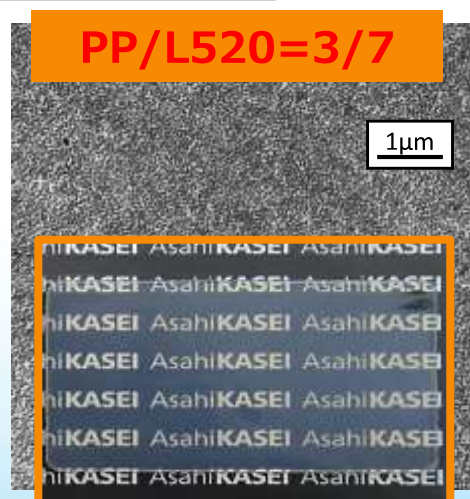
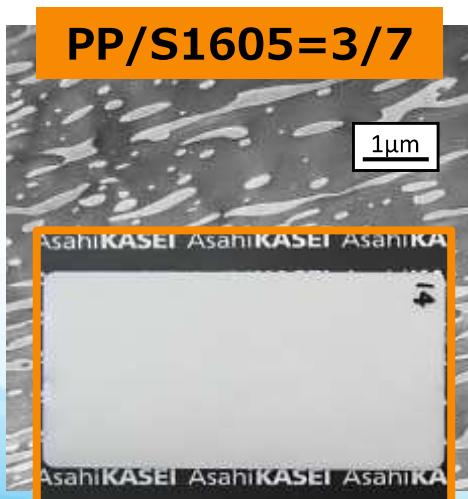
Single-layer film(200µm)

S1605:Conventional S.O.E.™

H1221:TUFTEC™ for PP modification

TEM & sample images

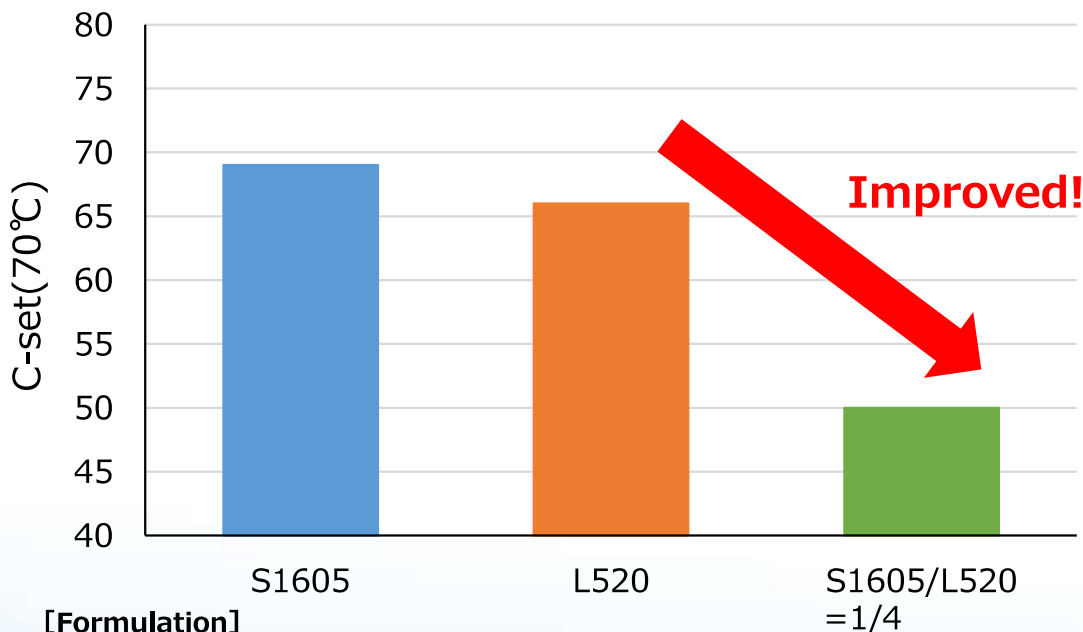
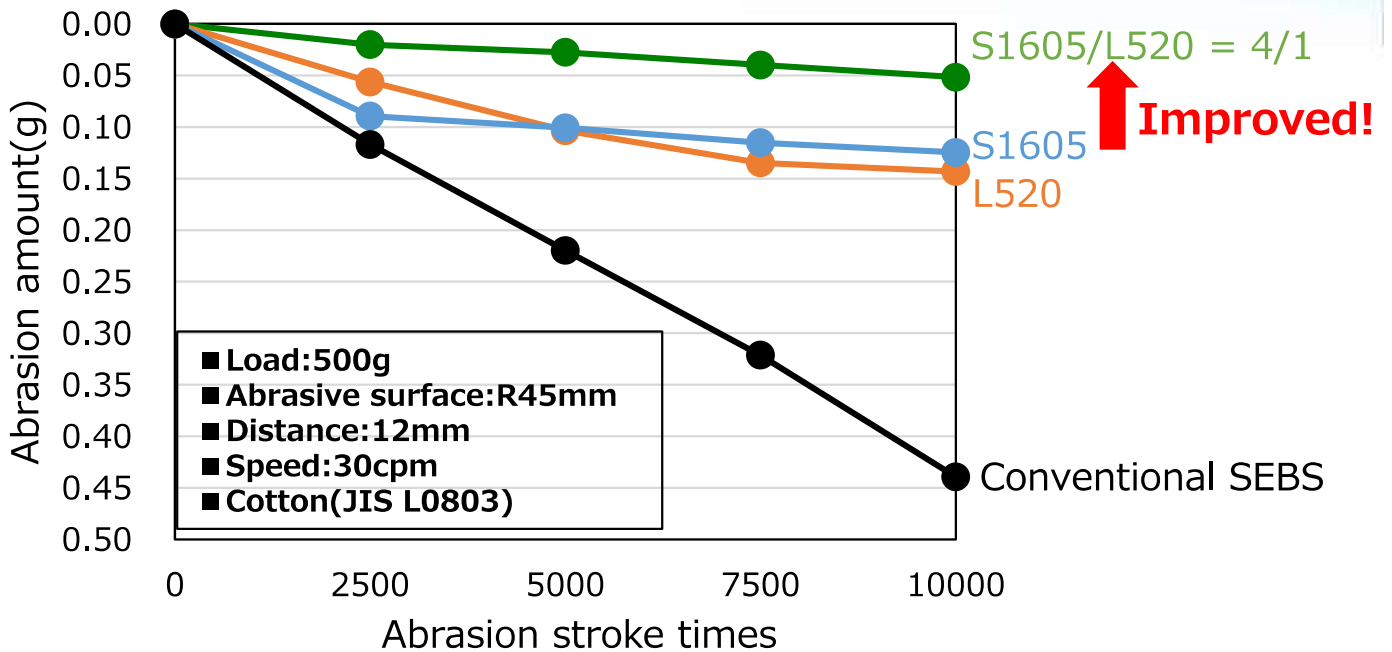
TEM Magnification:20000
 White stain: PP
 Black stain: Styrene



① L520 (Trial grade) : PP-compatible S.O.E.™

Improvement of abrasion resistance and C-set.

- L520 can provide good abrasion resistance and C-set comparable with S1605.
- Combination of S1605 and L520 can further improve abrasion resistance and C-set.



[Formulation]
 N504/(PP+Oil)/SEBS=50/120/50
 N504:HMW SEBS

② N525 (Trial grade) : HMW* S.O.E.™

*HMW : High Molecular Weight

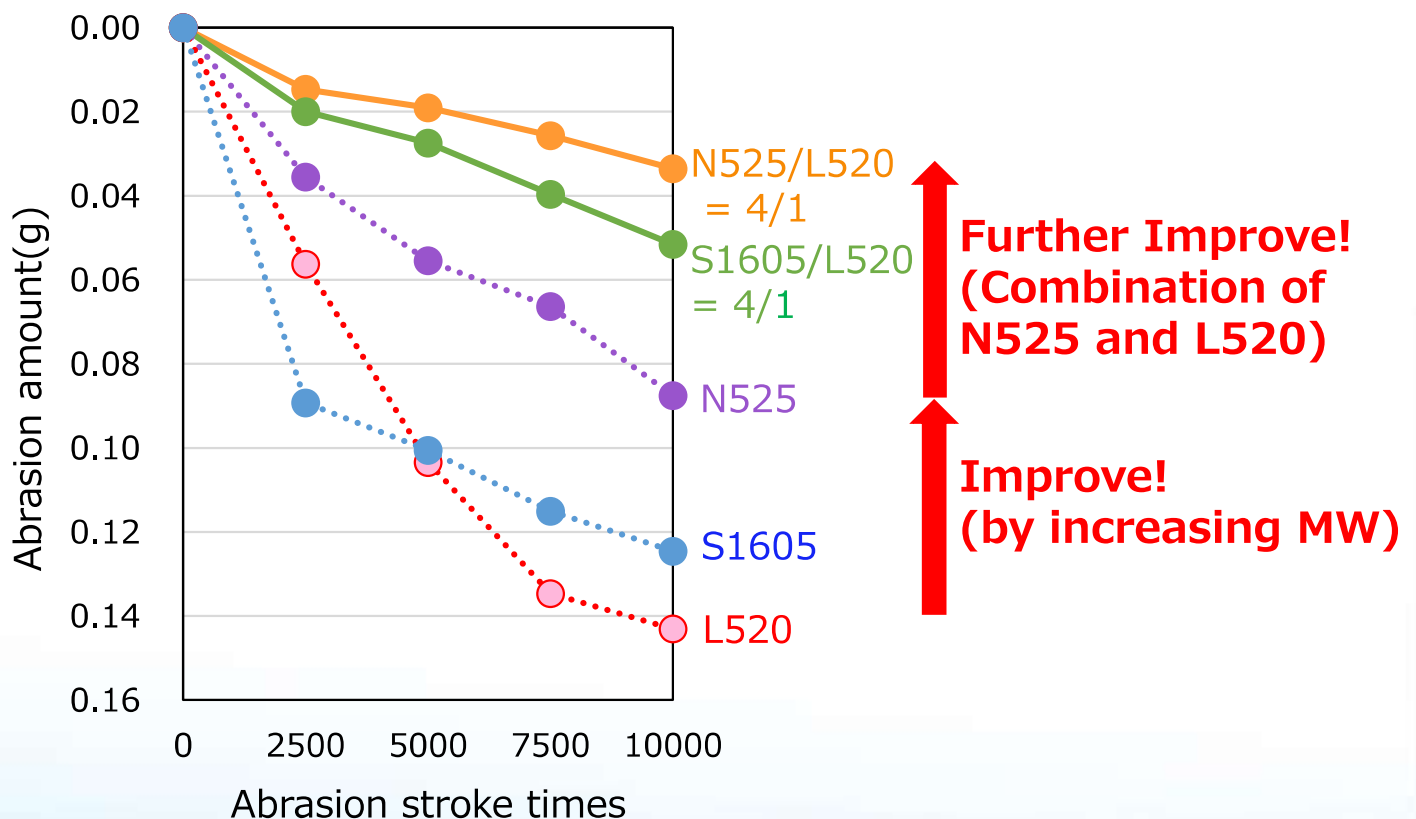
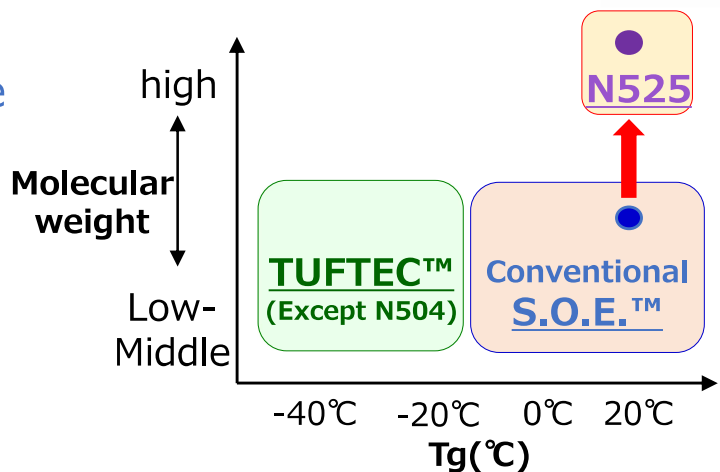
With its molecular weight being much higher than conventional S.O.E.™ grades, a newly developed S.O.E.™ grade "N525", in combination with L520 working as a compatibilizer, can provide the best abrasion resistance to your compounds (PP, TPE-S etc.).

Benefits

- Excellent abrasion resistance
- Good oil-resistance
- Vibration damping property
- Soft-touch feeling

Applications

- Automotive interior skin



[Formulation]
 N504/(PP+Oil)/SEBS=50/120/50
 N504:HMW SEBS

Physical properties of New S.O.E.™

	HardnessA (instant)	HardnessA (10s)	Tg (°C)	MFR (230°C/2.16kg)
Test method	ISO7619		-	ISO1133
L520(Pellet)	69	33	-30/25	15
N525(Crumb)	95	80	30	0.6

Physical properties of PP/TPE-S compounds

	S1605	L520	N525	S1605 /L520	N525 /L520
Compatibility with PP	Moderate	Excellent	Poor	Good	Good
Abrasion resistance	Moderate	Moderate	Good	Great	Excellent
C-set (70°C)	Poor	Poor	Moderate	Good	Good

All data and values based on specific test methods, and given for basic reference only and not as any warranty or specification. Applications shown for illustration only, and represent no warranty of suitability or non-infringement of intellectual property rights. The product of Asahi Kasei shown herein must not be used for any medical device or drug, except with its express written consent.

Contact us: akelastomer@om.asahi-kasei.co.jp

